



F..., F F..., \*

De a men of P cholog , Peking Uni e i , Beijing, China
PKU-IDG/McGo e n In i e fo B ain Re ea ch, Peking Uni e i , Beijing, China
G angh a School of Managemen , Peking Uni e i , Beijing, China
School of P cholog , Liaoning No mal Uni e i , Dalian, China

ARTICLE INFO

Article info :
A 7 2013
A 14 2013

Keywords:

A

ABSTRACT

Abstract content with keywords ACC, ACC/A, (A), C, A, C, A, fi, A, ACC/A, 2013 E...A

Introduction

Introduction content discussing research findings and citations (D, 2008; (A), 2004; (A), 2007; (A), 2005; (A), 2004; (B), 2005; (A), 2009; (E), 2011; (E), 2011; (A), 2010; (FC), A, -A; (A), 2005; (A), 2012; (A), 2004).

(C ... 2011, 2013). A E

( ... 2013). fi

A ... (D ... 2011; ... 2002), ... (2013) A C E

E C A C B

A C (2012) 128-188

( ... A ) ( ... C )

fi

fi

E fi

F

A

(A ... ; ... 2009) fi 2

E

( fi

( ... , F ... 2010),

C

A

C ( ... 2012). ( G ... 2012; G 2007 ; ... 2010; ... 2009) E (F ... 2008; ... 2010; ... 2012; ... 2013)

( ... )

ACC A

**Materials and methods**

*Pa i c i a n*

C (11 ; 19-26

D = 22.0 1.8 )

A

*S i m l i a n d o c e d e*

64 16 A (8 )

16 C (8 )

E C ( ... 2012). A

CD

E 4.0 5.0 E

100 ... A

E (A C )

D (A C )

D ( ... )

E

ACC j 4 8 A C fi

fi 2 , fi

(FD)  $\rho_{fi} < 0.05$  ( ).

D

**Results**

*fMRI da a c i i ion*

3-  
 $(64 \ 64 \ 32 \ 3.75 \ 3.75 \ 4 \ 3)$   
 $(F) = 2000$ ,  $(E) = 30$   
 $(F) = 24 \ 24$  ). A  
 $(256 \ 256 \ 144 \ 1.0 \ 1.0 \ 1.3 \ 3)$   
 $= 2530$ ,  $E = 3.37$ ,  $fi = 7$ ).

*fMRI da a anal i*

8 ( )  
 C  
 ( : , )

A  
 $(- i) \ F$   
 $(F \ L) \ 8$   
 $ACC ( // = 6/26/44)$   
 $A ( // = -36/$   
 24/2)  
 C ( i , 2009).

B 0.38 ( :// )  
 E ( ) , (A . C )  
 ( i )

fi  
 G  
 ( > 92%) fi

2 (E : ) 2 ( : A C ) 2  
 ( : j E j )

( - )  
 A ( - ) C  
 -j -j  
 ( - )  
 A C

fi

.A A ACC A C  
 fi (F(1,20) = 13.25  
 15.34, < 0.005 0.001)  
 ACC A C  
 j (F(1,20) = 7.30 7.73, < 0.05)  
 j (F(1,20) = 2.56 1.30, > 0.1).  
 A A ACC A A  
 fi (F(1,20) = 0.01 0.44,  
 > 0.1),  
 A  
 ACC A  
 ACC A fi  
 (F, 2011). A A ACC A  
 C (, 2009),

F . 2A). D j fi  
 ACC  
 < 0.05 (FD ACC  
 3). F . 2B A  
 ACC/A  
 fi  
 - 1.3(6)42(270(45)85(5.2(A)30.6(C)56.7.)15.9)-  
 fi fi  
 ( - )A . . ( - )c  
 j  
 fi

Whole b ain anal i

fi  
 A C .D  
 ACC (  
 ( - A), A, A,  
 ) ( 2

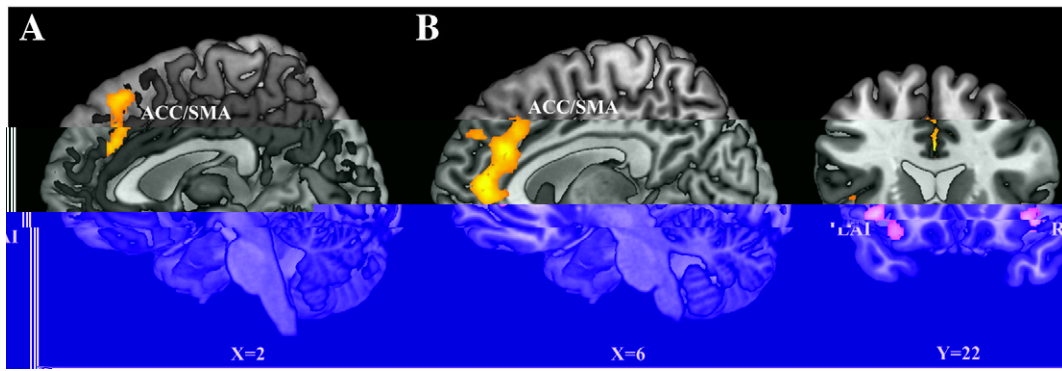
**Table 2**

C	C
Pain effecting in jdgmen Pain>Neutral	
A	1984 8 36 2 5.48
	852 -40 30 -16 5.64
	169 -165524 / 34.7( ) 2032(81190-202194) 0(6)27.4(4) 9-33.1714-14.9589-3.3515 D 2.2494( )17.E 8.7( )25.78.4( )-2247.4( 5

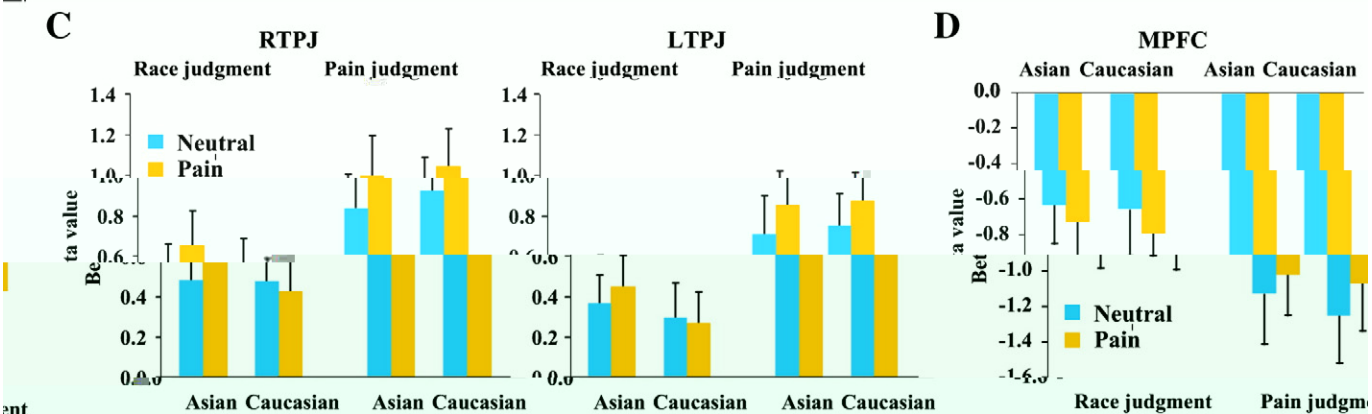
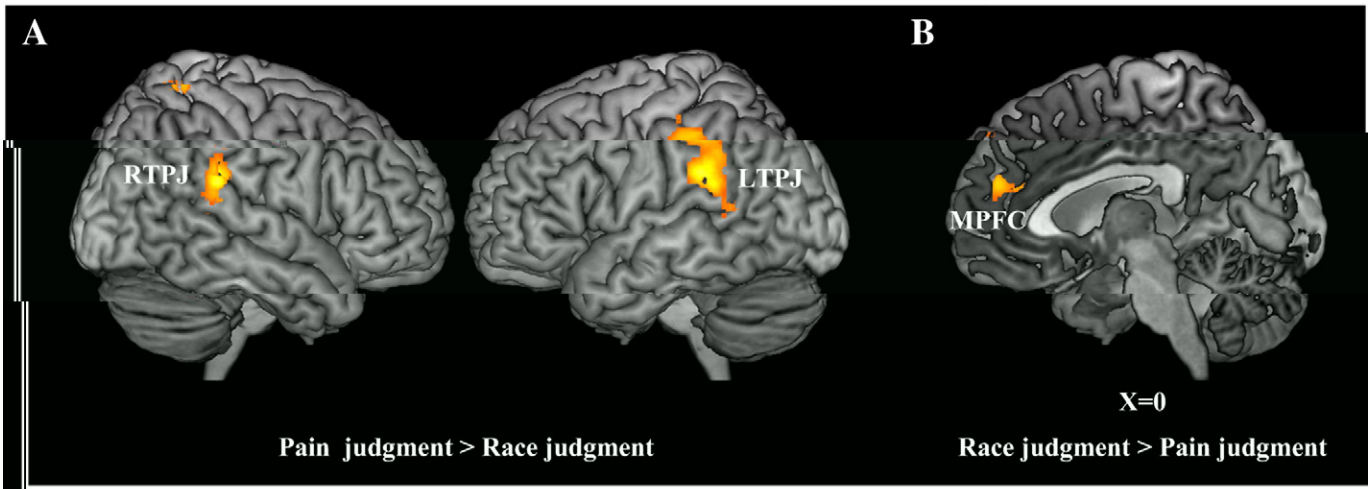
( - ) j . . ( - ) j A  
C fi  
ACC/ - A ( // = 2/46/12, = 2659)  
A ( : // = -40/6/-12, = 509; : // = 38/22/-10,  
= 496, F .3B) C A  
( - ) j . . ( - ) j  
fi  
j  
F  
j  
j  
fi  
( : // = -66/-36/28, = 721; : // = 68/-36/  
26, = 544, F .4A) ( //  
= 20/-50/60, = 315).  
fi  
FC ( // = 0/50/22, =  
513, F .4B).

**Discussion**

fi  
C



**Fig. 3.** (A) ACC/SMA activation in lateral views (X=2, X=6). (B) ACC/SMA activation in coronal view (Y=22). The ACC/SMA region is highlighted in yellow/orange. The blue shaded area represents the statistical parametric map.



**Fig. 4.** (A) RTPJ, LTPJ, and MPFC activation. (B) t-values for RTPJ. (C) t-values for LTPJ. (D) t-values for MPFC. The charts compare Race judgment and Pain judgment for Asian and Caucasian groups under Neutral and Pain conditions.

(... , 2012; ... , 2013) fi ... ACC Av ... fi ... E` ... fi ... ACC ( ... , 2009) ... (A ... , 2009) ... ACC Av ... , 2003; ... , 2005). ... , 2004; ... ACC Av ... ( ... , 2011) ... , 2011; G ... , 2012). fi , ACC (F ... fi ... Av ( ... Av) ... (A ... ; ... , 2009) ... fi ... ( ... , 2011) ... ( ... , 2011). ... fi ... ACC Av ... fi ... ACC Av ... FC ... (A ... F , 2006) ... ( ... , 2002) ... ( ... ) ... ACC ... ) ... ACC Av ... F ... A ... C ... C ... E` fi ( ... , 2012) ... C ... (E ... , 2005) ... ( ... , 2005). ... ( ... ACC Av). ... , 2005) ... ( C ... ) ... fi ... fi ... ACC Av ... fi ... fi ... F ... ( ... , 2009) ... ACC ... , 2010; ... (F ... , 1990; ... , 1993). ACC ... (2009) ... (3- ... ) ... 1 ... 150 ... fi ... ( ... , 2012), ... ( ... , 2009). ... ACC ... (2009). ... ACC Av ... fi ... .F ... B ... (2008) ... ACC Av

fi

## Acknowledgments

C (973` 2010CB833903), B  
F C ( j 30910103901, 81161120539, 91024032,  
91224008), B j F ( .  
111107067311058).

## Conflict of interest

fi

## Appendix A. Supplementary data

/10.1016/j. .2013.10.017.

:// .

## References

- A , D., F , C.D., 2006. . : .  
.7, 268–277.
- A , A., B , D., G , G., A , ., 2005. . . . .8, 955–960.
- A , A., , A., A , ., 2010. . . . .20, 1018–1022.
- A , . . . . , E., A , A., . . . . , C , ., A , ., ., 2013. . . . .
- B . . . . , A., B , ., ., F , A., . . . . , E., . . . . , 2005. . . . .3. . . . .6, 641–651.
- . . . . . A., . . . . , B., . . . .